

## Contents

<b>1</b>	<b>Interments in alphabetical order</b>	<b>2</b>
<b>2</b>	<b>Interments in date order</b>	<b>7</b>
<b>3</b>	<b>Interments by location</b>	<b>12</b>
3.1	South of tower . . . . .	13
3.2	South of tower – plan . . . . .	13
3.3	Left of main path . . . . .	16
3.4	Left of main path – plan . . . . .	16
3.5	Right of porch . . . . .	18
3.6	Right of porch – plan . . . . .	18
3.7	Right of main path . . . . .	22
3.8	Right of main path – plan . . . . .	22
3.9	Behind church . . . . .	25
3.10	Behind church – plan . . . . .	25
3.11	Memorial Garden (behind church) . . . . .	27
3.12	Memorial Garden (behind church) – plan . . . . .	27

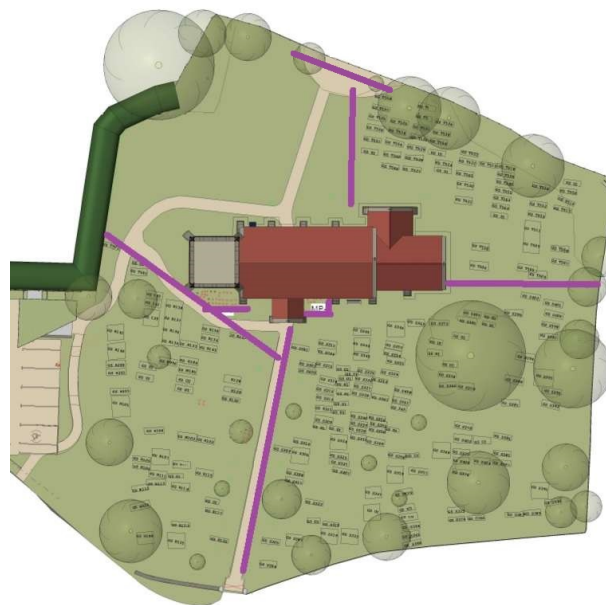


Figure : Division of areas used in this document

If you are viewing this using Adobe Reader or some other pdf viewers then you should be able to use the blue links to move around the document. If you can see small crosses on the plans, then by hovering your mouse pointer nearby you should be able to view details about that plot.

Much work has gone into this plan by several people over the years. Unfortunately some of the gravestones have now fallen down or have become unreadable and some others are very difficult to read. This document will probably contain several mistakes and is missing some information. Please let us know of any issues. Contact: Andy Batchelor 01386 462190 [andy@batchelorwood.plus.com](mailto:andy@batchelorwood.plus.com)

We try hard as a church council to keep the churchyard in a well-kept state but with a view to wildlife, and to have a churchyard that is an ideal place to have a sit down and escape day-to-day pressures. However, looking after the churchyard, and trying to ensure that it is safe for visitors, takes much time and money. We would welcome donations (of time or money) to help look after this lovely area.

## 1 Interments in alphabetical order

Name	Year	Ref	Page	Name	Year	Ref	Page
ADAMS J D	1980	R163	13	BROOKES A	1939	S344	23
AINGE E	1994	R180	13	BROOKES E	1970	R130	17
AINGE F M	1988	S386	23	BROOKES F	1897	R144	17
AINGE G A	1950	S304	23	BROOKES H	1963	R129	17
AINGE M	1959	S304	23	BROOKES J W	1898	S399	23
AINGE P R	1985	S386	23	BROOKES J	1931	R144	17
AINGE S J R	1936	S347	23	BROOKES S	1866	R102	17
ALDRIDGE B S F	1985	T519	26	BROOKES S	1890	S398	23
ALLEN J W	2010	T554	26	BROOKES W	1918	S344	23
ALLEN T M	2008	R998	17	CHANDLER E	1855	S349	23
AMBROSE J C	1962	R126	17	CHANDLER G	1957	T507	26
ANDREW E	1973	R101	17	CHANDLER J M	1908	T504	26
ANDREWS D M	1972	S383	23	CHANDLER J	1867	S349	23
ANDREWS H L	1992	S383	23	CHANDLER J	1884	S402	23
ANDREWS L F	1976	S322	23	CHANDLER J	1925	T504	26
ANDREWS L J	1987	S322	23	CHANDLER M M	1885	T504	26
ANSELL F J	1962	S302	23	CHANDLER M	1834	S402	23
ANSELL J W	1930	S319	23	CHANDLER T	1824	S349	23
ANSELL L F	1994	T532	26	CLARKE M A	1983	R140	17
ANSELL L M	1972	S302	23	CLARKE S J	2013	R200	17
ANSELL M	1943	S319	23	CLARKE T E	1949	R140	17
ANSELL P J	2007	S409	23	COCKBILL C A	2010	R192	17
ANSELL S	1925	S319	23	COCKBILL G H	2003	R192	17
ARGYLE M W	2023	T577	26	COLLINS E	1940	S378	23
ATKINSON R L	1896	T506	26	COLLINS H	1944	S378	23
BAKEWELL F N	1964	T524	26	COOKSON D A	2008	R181	13
BAKEWELL H B	1989	T524	26	COOKSON R A	1993	R181	13
BAMBURY E M	1977	S382	23	COOMBS G G	1932	S346	23
BAMBURY F S	1972	S382	23	COOMBS S A	1960	S346	23
BARBARO S L	2019	T572	26	COPELAND R	2018	T700	27
BARLOW C F	2019	T567	26	COWLEY R A	2018	S419	18
BARRETT B G	2006	T530	26	COWLEY W L	2016	S419	18
BARRETT F W	1997	T530	26	COX E R	1968	T555	26
BARTON K G	1972	R151	13	COX J R	1979	T555	26
BAUGH M	2021	R184	17	CRAWFORD S G	2003	T525	26
BAUGH N	1998	R184	17	CROUCH M A	1979	S375	23
BAYLES H	1837	S354	23	CROUCH W	1976	S375	23
BAYLES J		S353	23	CULL A		R104	17
BENNETT E M	1997	R162	13	CULL R	1870	R104	17
BENNETT G P	1991	R177	13	CULL S J		R104	17
BENNETT P G A	2008	R177	13	CURNOCK A	1725	S313	23
BEST J	1766	S311	23	CURNOCK A	1775	S313	23
BEST M		S436	23	CURNOCK H	1869	R123	17
BIBIS P J	2019	S409	23	CURNOCK J	1870	R123	17
BIDDLE G	1882	S318	23	CURNOCK L	1757	S313	23
BIDDLE H	1896	S318	23	CURNOCK L	1763	S313	23
BLUCK E	1899	S307	23	CURNOCK R	1775	S313	23
BLUCK H	1901	S307	23	CURNOCK W	1823	S313	23
BLUCK J	1930	S307	23	CUTTRISS E	1993	T533	26
BOSWORTH F C	1987	R166	13	CUTTRISS L H	1993	T533	26
BREWIN L A	2012	R157	13	DAVIDSON M P	2016	S415	18
BROICH E M	1987	R168	13	DAVIS G	1905	R996	17
BROICH H W	2005	R168	13				

# St James, Bishampton – Known Interments

12 Mar 2024

Name	Year	Ref	Page	Name	Year	Ref	Page
DAVIS H J	2007	R170	13	FOSTER A M	1976	S404	23
DAVIS J	1990	R170	13	FULLER G H	1995	R176	13
DAVIS S	1888	R996	17	GARDNER F	1922	R143	17
DAY C	1964	S306	23	GOLDING D S	2008	S410	18
DAY E C	2012	S306	23	GOLDING G O	1991	S410	18
DAY E	1921	S323	23	GOUGH A L	1991	T526	26
DAY F J	1944	S306	23	GOUGH M N	2005	T538	26
DAY F W	1975	S303	23	GOUGH R A	2015	T569	26
DAY G E	2015	S422	23	GREEN E	1868	S392	23
DAY G	1906	S324	23	GREEN E	1898	S392	23
DAY J R	1945	S308	23	GREEN J	1831	S406	23
DAY M J	1990	S303	23	GREEN J	1868	S392	23
DAY M	1922	S324	23	GREENALL G H	1896	S343	23
DAY R J	1966	S308	23	GREVEY J		S360	23
DEW D R	2012	R191	17	GROVE E D	1974	R154	13
DEW J L	2012	R191	17	GROVE G A T	1973	R154	13
DEW K R	2005	R191	17	HAMBLIN J	1872	R114	17
DICKINSON M J F	2022	T575	26	HAMBLIN M	1876	R114	17
DOBIE N	2011	T550	26	HAMPTON V	1973	S374	23
DORRELL J	1868	S397	23	HANDS H K E	2017	S301	23
DORRELL N J	2016	S416	18	HANDS H	1991	S301	23
DORRELL S	1866	S397	23	HANDS T	1881	S395	23
DOWNING J R J	2000	R186	17	HARDING G D	2016	S414	18
EASTWOOD E	1998	R161	17	HARRIS A S	2023	S437	23
ELKIN D D	1988	R169	13	HARRIS A T	1945	T510	26
EWINS E	1930	T505	26	HARRIS A	1968	T510	26
EWINS H	1917	T505	26	HARRIS C V	1979	S437	23
EWINS J	1906	T505	26	HARRIS E D	1997	S437	23
FARLEY M	1749	S314	23	HARRIS E W	1971	S389	23
FARLY R	1682	S435	23	HARRIS F M	1987	T510	26
FARLY W	1686	S435	23	HARRIS J	1905	S357	23
FAWCETT C F	2000	R187	17	HARRIS J	1962	T520	26
FIRKINS E	1876	S335	23	HARRIS L	1964	T520	26
FIRKINS G J	1868	S338	23	HARRIS M E	2015	T564	26
FIRKINS M A	1868	S337	23	HARRIS P M J	2023	T564	26
FIRKINS M	1829	S340	23	HARRIS S A	1927	S357	23
FIRKINS M	1871	S339	23	HASSELL R K	1998	R185	17
FIRKINS T P	1880	S407	23	HASSELL W H	2009	R185	17
FIRKINS W	1860	S340	23	HAYNES A A		S381	23
FISHER D S	1943	S316	23	HAYNES J	1949	S333	23
FISHER I J	1994	T531	26	HAYNES V M	1966	S333	23
FISHER L G	1991	S317	23	HAYTER E	2017	S417	18
FISHER R W J	1994	T531	26	HEMMING A	1963	S388	23
FISHER R	1984	S317	23	HEMMING E	1974	R157	13
FLETCHER J	1878	R115	17	HEMMING P R	1981	R157	13
FLETCHER M	1869	R115	17	HEMMING R	1928	S388	23
FOLLOWS J E	1980	T518	26	HEWITT A	1870	R115	17
FOLLOWS M S	1923	R105	17	HODGKINS S	1810	S328	23
FOLLOWS R M	1984	T518	26	HORDER A J	2009	S420	23
FORD A A	1991	R172	13	HUMPHREYS C	1989	R160	13
FORD E	1881	R103	17	HURDMAN E	1889	S387	23
FORD M	1855	R103	17	HURDMAN M	1912	S387	23

# St James, Bishampton – Known Interments

12 Mar 2024

Name	Year	Ref	Page	Name	Year	Ref	Page
JACKSON A E	1996	R174	13	MILES P C	2004	T536	26
JACKSON I I	1998	R174	13	MORRIS G A	1999	T529	26
JESSON (Com only) M P	1994	R193	17	MORRIS G W	1992	S412	18
JESSON R E W	2004	R193	17	MORRIS G	1954	S369	23
JOHNES M D	2020	T571	26	MORRIS M A	1969	S369	23
JONES A H D	1994	R196	13	MORRIS M L B	2005	S412	18
JONES A W	1942	S373	23	MORRIS M	1997	T529	26
JONES C E	1944	S373	23	MOSS H	1931	T501	17
JONES E M	1981	S370	23	MOULE S R	2016	R157	13
JONES G E	1988	S411	18	NASH D W	2009	T556	26
JONES G E	2006	S370	23	NEWBURY A J E	1994	R179	13
JONES G	1994	S411	18	NEWBURY K A	1998	R179	13
JONES K S	1984	R164	13	NIBLETT B	1878	S400	23
JONES L M	2000	T534	26	NIBLETT E J	1980	R157	13
JONES L	2003	T535	26	NIBLETT E M	1938	S359	23
JONES P G	1999	T535	26	NIBLETT E	1881	S400	23
JONES R K	2013	T534	26	NIBLETT J	1955	S359	23
KINMAN W	1714	S355	23	NIBLETT W	1877	S401	23
KNIGHT G	1840	R133	17	NIVEN A	1872	R127	17
KNIGHT L	1901	R133	17	NIVEN A	1907	R127	17
LAMPITT F W	1960	T503	17	NIVEN H	1890	R127	17
LAMPITT G G	2006	T503	17	NIVEN M	1902	R127	17
LANE E M R	2017	T516	26	OAKLEY L M	2020	T702	27
LANE E	1764	S367	23	PANTING J	1931	R128	17
LANE J E	1800	S361	23	PARRY F	1990	R165	13
LANE M	1754	S367	23	PARRY T H	1985	R165	13
LANE R A J	1991	T516	26	PEARCE A M	2015	R169	13
LANE R	1767	S363	23	PEARCE M D	2013	R169	13
LEE P C	2014	S418	18	PERKS J	1933	T555	26
LEE R F	2017	S418	18	PERKS R	1934	T555	26
LEWIS D K	1972	R152	13	PETERS F W	1975	R158	13
LIDSEY J	1895	R117	17	PETRIE-HAY W G	1989	R134	17
LIDSEY Z	1906	R117	17	PITTS M	1890	R113	17
LISTER C	1990	R171	13	POOLE A J	2009	T558	26
LISTER O	2005	R171	13	POOLE D	2005	T558	26
LLOYD A	1934	S362	23	POOLE O J	2000	T537	26
LUCK A S	1973	R155	13	POOLE S S J	2006	T557	26
LUCK L E	1975	R155	13	POWLES E F	1980	S385	23
LUDLOW C	1978	S384	23	POWLES M M	2003	S385	23
LUDLOW E	1939	R108	17	REDMAN M J	1997	T528	26
LUDLOW J G	1976	S384	23	REEVES A	1946	R141	17
LUDLOW J I	2002	R189	17	REEVES J T	1929	R141	17
LUDLOW R	1955	R108	17	RIGG L	2014	T540	26
MALINS S	1929	R101	17	RIGHTON A H	1920	S347	23
MALINS W	1925	R101	17	ROBERTSON H K	2012	T566	26
MALLINS A S	1966	R995	17	ROBERTSON K S	1993	R182	13
MALLINS R	1965	R995	17	ROBERTSON W A	2020	T566	26
MASTER W	1766	S309	23	RUSSELL M	1804	S329	23
MASTERS C E	1968	S305	23	RUSSELL W	1800	S329	23
MAYOLL S	1885	R104	17	SALE M A	1987	T522	26
MCGINITY B J	2019	T574	26	SALISBURY A J	1930	T509	26
MILES G	2014	T536	26	SALISBURY B J	2015	S416	18

Name	Year	Ref	Page	Name	Year	Ref	Page
SALISBURY C J	1987	T508	26	STEPHENS D	1964	S377	23
SALISBURY L	1966	T509	26	STEPHENS G	1995	S403	23
SALISBURY T	1932	T511	26	STEPHENS J	1865	S350	23
SANDERS B D	1975	R153	13	STEPHENS J	1880	S356	23
SANDERS H A L	1982	R153	13	STEPHENS M R	2009	S408	23
SANDERS J	2010	R993	13	STEPHENS M	1847	S351	23
SEABRIGHT (Mem only) K J	1941	S391	23	STEPHENS M	1915	R125	17
SEABRIGHT H	1956	S391	23	STEPHENS R A	1976	S408	23
SEABRIGHT S E	1963	S391	23	STEPHENS R	1848	S351	23
SHELTON J	1929	S379	23	STEPHENS R	1875	S351	23
SHERWOOD E E	1955	S368	23	STEPHENS W	1803	S327	23
SHERWOOD F	1947	S368	23	STEPHENS W	1847	S351	23
SHOPLAND L J	1988	T513	26	STEPHENS W	1896	R125	17
SHOWELL J P D	1974	R134	17	STEVENS S M	2017	R901	17
SMALES E M	2002	R167	13	STINTON C	1921	R112	17
SMALES R	1987	R167	13	STINTON G	1906	R112	17
SMALL W	1706	S330	23	STONYER H E	1946	R139	17
SMITH (Com only) H	1945	T521	26	STONYER S	1940	R139	17
SMITH E A	1944	S366	23	SWINGLE A E	2007	R997	17
SMITH E	1942	T521	26	SWINGLE E F	2016	R997	17
SMITH F R	1938	S366	23	SWINGLER A W	1975	R159	13
SMITH G F	2001	S421	23	SWINGLER B E	2003	R159	13
SMITH G M	1991	S364	23	TANDY M	1729	S325	23
SMITH G M	2002	S365	23	TANK J R	2023	T553	26
SMITH H F	1971	S365	23	TANK R	1988	T552	26
SMITH H J	1987	S421	23	TANK S H	2010	T553	26
SMITH H	1973	S364	23	TARVER F E	2015	T565	26
SMITH J	1694	S405	23	TREDWELL M	1875	S402	23
SMITH M J	1988	S421	23	TREDWELL M	1956	S434	23
SOUTHAM M E W	1976	S390	23	TREDWELL W	1965	S434	23
SOUTHAM P C	1974	S390	23	TRUSWELL L J	2008	R994	13
SPIERS A E	1924	R138	17	TURNER V G	2001	R188	17
SPIERS B	1883	R142	17	VALLANCE G E	2000	R195	17
SPIERS E	1882	R145	17	WARD E A	2014	T562	26
SPIERS E	1900	R139	17	WARD N J B	2015	T562	26
SPIERS E	1906	R137	17	WARNER C T M	1995	R175	13
SPIERS G	1909	R137	17	WARNER D F	2001	R175	13
SPIERS J	1890	R139	17	WARNER P M	1978	S376	23
SPIERS J	1895	R136	17	WASE A L	1997	T527	26
SPIERS M	1858	S315	23	WASE C	1995	R178	13
SPIERS M	1876	S315	23	WATTS G	2000	R173	13
SPIERS M	1914	R137	17	WATTS N	1996	R173	13
SPIERS R	1875	S315	23	WEAVER A	2002	T514	26
SPIERS S	1925	R135	17	WEAVER R	1990	T514	26
SPILSBURY K R	2005	R156	13	WEBB A	1988	T523	26
SPILSBURY W	1973	R156	13	WHEELER M	1953	S345	23
STAFFORD-WOOD J	2002	R190	17	WHEELER W K	1938	S345	23
STAFFORD-WOOD M M N	2006	R190	17	WHEELER W	1910	S358	23
STANTON A H	1934	R107	17	WILLETTS B	1824	S394	23
STANTON A	1881	R111	17	WILLETTS B	1849	S424	23
STANTON E	1902	R107	17	WILLETTS J	1834	S394	23
STANTON H	1875	R111	17	WILLETTS J	1838	S426	23

# St James, Bishampton – Known Interments

12 Mar 2024

Name	Year	Ref	Page	Name	Year	Ref	Page
<a href="#">WILLETTS J</a>	1879	S393	<a href="#">23</a>	<a href="#">WILLIAMS E</a>	1871	R122	<a href="#">17</a>
<a href="#">WILLETTS L</a>	1898	S393	<a href="#">23</a>	<a href="#">WILLIAMS H</a>	1906	R122	<a href="#">17</a>
<a href="#">WILLETTS M</a>	1851	S423	<a href="#">23</a>	<a href="#">WILLIAMS L A</a>	1898	R122	<a href="#">17</a>
<a href="#">WILLETTS M</a>	1862	S393	<a href="#">23</a>	<a href="#">WILLIAMS L G</a>	2007	R999	<a href="#">17</a>
<a href="#">WILLETTS M</a>	1875	S429	<a href="#">23</a>	<a href="#">WILLIAMS R F</a>	2009	R999	<a href="#">17</a>
<a href="#">WILLETTS T</a>	1848	S425	<a href="#">23</a>	<a href="#">WOOD A R</a>	2005	T539	<a href="#">26</a>
<a href="#">WILLETTS W</a>	1892	S393	<a href="#">23</a>	<a href="#">WOODWARD J F</a>	1892	R106	<a href="#">17</a>

## 2 Interments in date order

Name	Year	Ref	Page	Name	Year	Ref	Page
BAYLES J		S353	23	DORRELL J	1868	S397	23
BEST M		S436	23	FIRKINS G J	1868	S338	23
CULL A		R104	17	FIRKINS M A	1868	S337	23
CULL S J		R104	17	GREEN E	1868	S392	23
GREVEY J		S360	23	GREEN J	1868	S392	23
HAYNES A A		S381	23	CURNOCK H	1869	R123	17
FARLY R	1682	S435	23	FLETCHER M	1869	R115	17
FARLY W	1686	S435	23	CULL R	1870	R104	17
SMITH J	1694	S405	23	CURNOCK J	1870	R123	17
SMALL W	1706	S330	23	HEWITT A	1870	R115	17
KINMAN W	1714	S355	23	FIRKINS M	1871	S339	23
CURNOCK A	1725	S313	23	WILLIAMS E	1871	R122	17
TANDY M	1729	S325	23	HAMBLIN J	1872	R114	17
FARLEY M	1749	S314	23	NIVEN A	1872	R127	17
LANE M	1754	S367	23	SPIERS R	1875	S315	23
CURNOCK L	1757	S313	23	STANTON H	1875	R111	17
CURNOCK L	1763	S313	23	STEPHENS R	1875	S351	23
LANE E	1764	S367	23	TREDWELL M	1875	S402	23
BEST J	1766	S311	23	WILLETTS M	1875	S429	23
MASTER W	1766	S309	23	FIRKINS E	1876	S335	23
LANE R	1767	S363	23	HAMBLIN M	1876	R114	17
CURNOCK A	1775	S313	23	SPIERS M	1876	S315	23
CURNOCK R	1775	S313	23	NIBLETT W	1877	S401	23
LANE J E	1800	S361	23	FLETCHER J	1878	R115	17
RUSSELL W	1800	S329	23	NIBLETT B	1878	S400	23
STEPHENS W	1803	S327	23	WILLETTS J	1879	S393	23
RUSSELL M	1804	S329	23	FIRKINS T P	1880	S407	23
HODGKINS S	1810	S328	23	STEPHENS J	1880	S356	23
CURNOCK W	1823	S313	23	FORD E	1881	R103	17
CHANDLER T	1824	S349	23	HANDS T	1881	S395	23
WILLETTS B	1824	S394	23	NIBLETT E	1881	S400	23
FIRKINS M	1829	S340	23	STANTON A	1881	R111	17
GREEN J	1831	S406	23	BIDDLE G	1882	S318	23
CHANDLER M	1834	S402	23	SPIERS E	1882	R145	17
WILLETTS J	1834	S394	23	SPIERS B	1883	R142	17
BAYLES H	1837	S354	23	CHANDLER J	1884	S402	23
WILLETTS J	1838	S426	23	CHANDLER M M	1885	T504	26
KNIGHT G	1840	R133	17	MAYOLL S	1885	R104	17
STEPHENS M	1847	S351	23	DAVIS S	1888	R996	17
STEPHENS W	1847	S351	23	HURDMAN E	1889	S387	23
STEPHENS R	1848	S351	23	BROOKES S	1890	S398	23
WILLETTS T	1848	S425	23	NIVEN H	1890	R127	17
WILLETTS B	1849	S424	23	PITTS M	1890	R113	17
WILLETTS M	1851	S423	23	SPIERS J	1890	R139	17
CHANDLER E	1855	S349	23	WILLETTS W	1892	S393	23
FORD M	1855	R103	17	WOODWARD J F	1892	R106	17
SPIERS M	1858	S315	23	LIDSEY J	1895	R117	17
FIRKINS W	1860	S340	23	SPIERS J	1895	R136	17
WILLETTS M	1862	S393	23	ATKINSON R L	1896	T506	26
STEPHENS J	1865	S350	23	BIDDLE H	1896	S318	23
BROOKES S	1866	R102	17	GREENALL G H	1896	S343	23
DORRELL S	1866	S397	23	STEPHENS W	1896	R125	17
CHANDLER J	1867	S349	23				

# St James, Bishampton – Known Interments

12 Mar 2024

Name	Year	Ref	Page	Name	Year	Ref	Page
BROOKES F	1897	R144	17	SALISBURY T	1932	T511	26
BROOKES J W	1898	S399	23	PERKS J	1933	T555	26
GREEN E	1898	S392	23	LLOYD A	1934	S362	23
WILLETTS L	1898	S393	23	PERKS R	1934	T555	26
WILLIAMS L A	1898	R122	17	STANTON A H	1934	R107	17
BLUCK E	1899	S307	23	AINGE S J R	1936	S347	23
SPIERS E	1900	R139	17	NIBLETT E M	1938	S359	23
BLUCK H	1901	S307	23	SMITH F R	1938	S366	23
KNIGHT L	1901	R133	17	WHEELER W K	1938	S345	23
NIVEN M	1902	R127	17	BROOKES A	1939	S344	23
STANTON E	1902	R107	17	LUDLOW E	1939	R108	17
DAVIS G	1905	R996	17	COLLINS E	1940	S378	23
HARRIS J	1905	S357	23	STONYER S	1940	R139	17
DAY G	1906	S324	23	SEABRIGHT (Mem only) K J	1941	S391	23
EWINS J	1906	T505	26	JONES A W	1942	S373	23
LIDSEY Z	1906	R117	17	SMITH E	1942	T521	26
SPIERS E	1906	R137	17	ANSELL M	1943	S319	23
STINTON G	1906	R112	17	FISHER D S	1943	S316	23
WILLIAMS H	1906	R122	17	COLLINS H	1944	S378	23
NIVEN A	1907	R127	17	DAY F J	1944	S306	23
CHANDLER J M	1908	T504	26	JONES C E	1944	S373	23
SPIERS G	1909	R137	17	SMITH E A	1944	S366	23
WHEELER W	1910	S358	23	DAY J R	1945	S308	23
HURDMAN M	1912	S387	23	HARRIS A T	1945	T510	26
SPIERS M	1914	R137	17	SMITH (Com only) H	1945	T521	26
STEPHENS M	1915	R125	17	REEVES A	1946	R141	17
EWINS H	1917	T505	26	STONYER H E	1946	R139	17
BROOKES W	1918	S344	23	SHERWOOD F	1947	S368	23
RIGHTON A H	1920	S347	23	CLARKE T E	1949	R140	17
DAY E	1921	S323	23	HAYNES J	1949	S333	23
STINTON C	1921	R112	17	AINGE G A	1950	S304	23
DAY M	1922	S324	23	WHEELER M	1953	S345	23
GARDNER F	1922	R143	17	MORRIS G	1954	S369	23
FOLLOWS M S	1923	R105	17	LUDLOW R	1955	R108	17
SPIERS A E	1924	R138	17	NIBLETT J	1955	S359	23
ANSELL S	1925	S319	23	SHERWOOD E E	1955	S368	23
CHANDLER J	1925	T504	26	SEABRIGHT H	1956	S391	23
MALINS W	1925	R101	17	TREDWELL M	1956	S434	23
SPIERS S	1925	R135	17	CHANDLER G	1957	T507	26
HARRIS S A	1927	S357	23	AINGE M	1959	S304	23
HEMMING R	1928	S388	23	COOMBS S A	1960	S346	23
MALINS S	1929	R101	17	LAMPITT F W	1960	T503	17
REEVES J T	1929	R141	17	AMBROSE J C	1962	R126	17
SHELTON J	1929	S379	23	ANSELL F J	1962	S302	23
ANSELL J W	1930	S319	23	HARRIS J	1962	T520	26
BLUCK J	1930	S307	23	BROOKES H	1963	R129	17
EWINS E	1930	T505	26	HEMMING A	1963	S388	23
SALISBURY A J	1930	T509	26	SEABRIGHT S E	1963	S391	23
BROOKES J	1931	R144	17	BAKEWELL F N	1964	T524	26
MOSS H	1931	T501	17	DAY C	1964	S306	23
PANTING J	1931	R128	17	HARRIS L	1964	T520	26
COOMBS G G	1932	S346	23	STEPHENS D	1964	S377	23



# St James, Bishampton – Known Interments

12 Mar 2024

Name	Year	Ref	Page	Name	Year	Ref	Page
MALLINS R	1965	R995	17	CLARKE M A	1983	R140	17
TREDWELL W	1965	S434	23	FISHER R	1984	S317	23
DAY R J	1966	S308	23	FOLLOWS R M	1984	T518	26
HAYNES V M	1966	S333	23	JONES K S	1984	R164	13
MALLINS A S	1966	R995	17	AINGE P R	1985	S386	23
SALISBURY L	1966	T509	26	ALDRIDGE B S F	1985	T519	26
COX E R	1968	T555	26	PARRY T H	1985	R165	13
HARRIS A	1968	T510	26	ANDREWS L J	1987	S322	23
MASTERS C E	1968	S305	23	BOSWORTH F C	1987	R166	13
MORRIS M A	1969	S369	23	BROICH E M	1987	R168	13
BROOKES E	1970	R130	17	HARRIS F M	1987	T510	26
HARRIS E W	1971	S389	23	SALE M A	1987	T522	26
SMITH H F	1971	S365	23	SALISBURY C J	1987	T508	26
ANDREWS D M	1972	S383	23	SMALES R	1987	R167	13
ANSELL L M	1972	S302	23	SMITH H J	1987	S421	23
BAMBURY F S	1972	S382	23	AINGE F M	1988	S386	23
BARTON K G	1972	R151	13	ELKIN D D	1988	R169	13
LEWIS D K	1972	R152	13	JONES G E	1988	S411	18
ANDREW E	1973	R101	17	SHOPLAND L J	1988	T513	26
GROVE G A T	1973	R154	13	SMITH M J	1988	S421	23
HAMPTON V	1973	S374	23	TANK R	1988	T552	26
LUCK A S	1973	R155	13	WEBB A	1988	T523	26
SMITH H	1973	S364	23	BAKEWELL H B	1989	T524	26
SPILSBURY W	1973	R156	13	HUMPHREYS C	1989	R160	13
GROVE E D	1974	R154	13	PETRIE-HAY W G	1989	R134	17
HEMMING E	1974	R157	13	DAVIS J	1990	R170	13
SHOWELL J P D	1974	R134	17	DAY M J	1990	S303	23
SOUTHAM P C	1974	S390	23	LISTER C	1990	R171	13
DAY F W	1975	S303	23	PARRY F	1990	R165	13
LUCK L E	1975	R155	13	WEAVER R	1990	T514	26
PETERS F W	1975	R158	13	BENNETT G P	1991	R177	13
SANDERS B D	1975	R153	13	FISHER L G	1991	S317	23
SWINGLER A W	1975	R159	13	FORD A A	1991	R172	13
ANDREWS L F	1976	S322	23	GOLDING G O	1991	S410	18
CROUCH W	1976	S375	23	GOUGH A L	1991	T526	26
FOSTER A M	1976	S404	23	HANDS H	1991	S301	23
LUDLOW J G	1976	S384	23	LANE R A J	1991	T516	26
SOUTHAM M E W	1976	S390	23	SMITH G M	1991	S364	23
STEPHENS R A	1976	S408	23	ANDREWS H L	1992	S383	23
BAMBURY E M	1977	S382	23	MORRIS G W	1992	S412	18
LUDLOW C	1978	S384	23	COOKSON R A	1993	R181	13
WARNER P M	1978	S376	23	CUTTRISS E	1993	T533	26
COX J R	1979	T555	26	CUTTRISS L H	1993	T533	26
CROUCH M A	1979	S375	23	ROBERTSON K S	1993	R182	13
HARRIS C V	1979	S437	23	AINGE E	1994	R180	13
ADAMS J D	1980	R163	13	ANSELL L F	1994	T532	26
FOLLOWS J E	1980	T518	26	FISHER I J	1994	T531	26
NIBLETT E J	1980	R157	13	FISHER R W J	1994	T531	26
POWLES E F	1980	S385	23	JESSON (Com only) M P	1994	R193	17
HEMMING P R	1981	R157	13	JONES A H D	1994	R196	13
JONES E M	1981	S370	23	JONES G	1994	S411	18
SANDERS H A L	1982	R153	13	NEWBURY A J E	1994	R179	13

Name	Year	Ref	Page	Name	Year	Ref	Page
FULLER G H	1995	R176	13	STAFFORD-WOOD M M N	2006	R190	17
STEPHENS G	1995	S403	23	ANSELL P J	2007	S409	23
WARNER C T M	1995	R175	13	DAVIS H J	2007	R170	13
WASE C	1995	R178	13	SWINGLE A E	2007	R997	17
JACKSON A E	1996	R174	13	WILLIAMS L G	2007	R999	17
WATTS N	1996	R173	13	ALLEN T M	2008	R998	17
BARRETT F W	1997	T530	26	BENNETT P G A	2008	R177	13
BENNETT E M	1997	R162	13	COOKSON D A	2008	R181	13
HARRIS E D	1997	S437	23	GOLDING D S	2008	S410	18
MORRIS M	1997	T529	26	TRUSWELL L J	2008	R994	13
REDMAN M J	1997	T528	26	HASELL W H	2009	R185	17
WASE A L	1997	T527	26	HORDER A J	2009	S420	23
BAUGH N	1998	R184	17	NASH D W	2009	T556	26
EASTWOOD E	1998	R161	17	POOLE A J	2009	T558	26
HASELL R K	1998	R185	17	STEPHENS M R	2009	S408	23
JACKSON I I	1998	R174	13	WILLIAMS R F	2009	R999	17
NEWBURY K A	1998	R179	13	ALLEN J W	2010	T554	26
JONES P G	1999	T535	26	COCKBILL C A	2010	R192	17
MORRIS G A	1999	T529	26	SANDERS J	2010	R993	13
DOWNING J R J	2000	R186	17	TANK S H	2010	T553	26
FAWCETT C F	2000	R187	17	DOBIE N	2011	T550	26
JONES L M	2000	T534	26	BREWIN L A	2012	R157	13
POOLE O J	2000	T537	26	DAY E C	2012	S306	23
VALLANCE G E	2000	R195	17	DEW D R	2012	R191	17
WATTS G	2000	R173	13	DEW J L	2012	R191	17
SMITH G F	2001	S421	23	ROBERTSON H K	2012	T566	26
TURNER V G	2001	R188	17	CLARKE S J	2013	R200	17
WARNER D F	2001	R175	13	JONES R K	2013	T534	26
LUDLOW J I	2002	R189	17	PEARCE M D	2013	R169	13
SMALES E M	2002	R167	13	LEE P C	2014	S418	18
SMITH G M	2002	S365	23	MILES G	2014	T536	26
STAFFORD-WOOD J	2002	R190	17	RIGG L	2014	T540	26
WEAVER A	2002	T514	26	WARD E A	2014	T562	26
COCKBILL G H	2003	R192	17	DAY G E	2015	S422	23
CRAWFORD S G	2003	T525	26	GOUGH R A	2015	T569	26
JONES L	2003	T535	26	HARRIS M E	2015	T564	26
POWLES M M	2003	S385	23	PEARCE A M	2015	R169	13
SWINGLER B E	2003	R159	13	SALISBURY B J	2015	S416	18
JESSON R E W	2004	R193	17	TARVER F E	2015	T565	26
MILES P C	2004	T536	26	WARD N J B	2015	T562	26
BROICH H W	2005	R168	13	COWLEY W L	2016	S419	18
DEW K R	2005	R191	17	DAVIDSON M P	2016	S415	18
GOUGH M N	2005	T538	26	DORRELL N J	2016	S416	18
LISTER O	2005	R171	13	HARDING G D	2016	S414	18
MORRIS M L B	2005	S412	18	MOULE S R	2016	R157	13
POOLE D	2005	T558	26	SWINGLE E F	2016	R997	17
SPILSBURY K R	2005	R156	13	HANDS H K E	2017	S301	23
WOOD A R	2005	T539	26	HAYTER E	2017	S417	18
BARRETT B G	2006	T530	26	LANE E M R	2017	T516	26
JONES G E	2006	S370	23	LEE R F	2017	S418	18
LAMPITT G G	2006	T503	17	STEVENS S M	2017	R901	17
POOLE S S J	2006	T557	26	COPELAND R	2018	T700	27

# St James, Bishampton – Known Interments

12 Mar 2024

Name	Year	Ref	Page	Name	Year	Ref	Page
<a href="#">COWLEY R A</a>	2018	S419	<a href="#">18</a>	<a href="#">ROBERTSON W A</a>	2020	T566	<a href="#">26</a>
<a href="#">BARBARO S L</a>	2019	T572	<a href="#">26</a>	<a href="#">BAUGH M</a>	2021	R184	<a href="#">17</a>
<a href="#">BARLOW C F</a>	2019	T567	<a href="#">26</a>	<a href="#">DICKINSON M J F</a>	2022	T575	<a href="#">26</a>
<a href="#">BIBIS P J</a>	2019	S409	<a href="#">23</a>	<a href="#">ARGYLE M W</a>	2023	T577	<a href="#">26</a>
<a href="#">MCGINITY B J</a>	2019	T574	<a href="#">26</a>	<a href="#">HARRIS A S</a>	2023	S437	<a href="#">23</a>
<a href="#">JOHNES M D</a>	2020	T571	<a href="#">26</a>	<a href="#">HARRIS P M J</a>	2023	T564	<a href="#">26</a>
<a href="#">OAKLEY L M</a>	2020	T702	<a href="#">27</a>	<a href="#">TANK J R</a>	2023	T553	<a href="#">26</a>

### 3 Interments by location

SouthOfTower

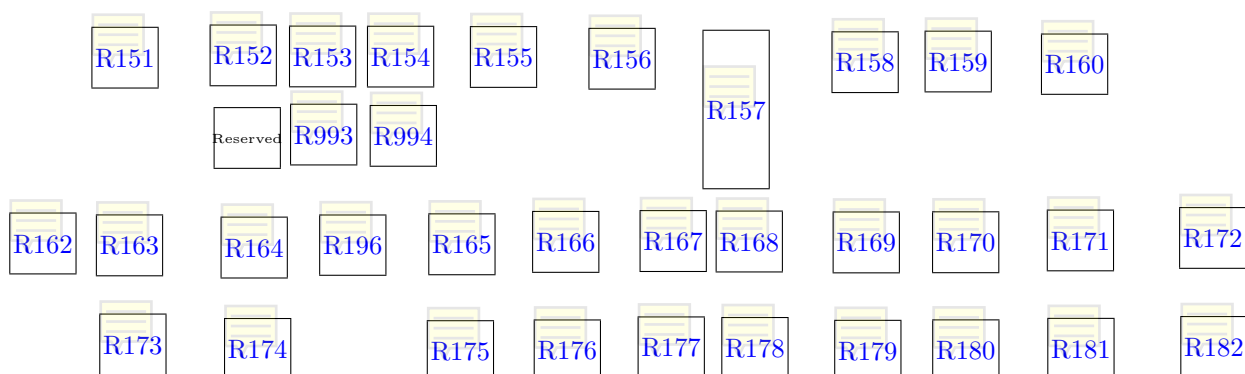
Table c: South of tower

Surname	First Names	Date died	Int. date		Ref
<a href="#">BARTON</a>	Kenneth George	9 Jan 1972	16 Jan 1972	C	R151
<a href="#">LEWIS</a>	Dorothy Kate	8 Dec 1972	17 Dec 1972	C	R152
<a href="#">SANDERS</a>	Beryl Doreen	2 Apr 1975	27 Apr 1975	C	R153
<a href="#">SANDERS</a>	Harriet Amelia Louisa	28 Nov 1982	19 Dec 1982	C	R153
<a href="#">GROVE</a>	George Alfred Thomas	? ??? 1973	9 Sep 1973	C	R154
<a href="#">GROVE</a>	Edith Dorothy	? ??? 1974	1 Nov 1974	C	R154
<a href="#">LUCK</a>	Albert Stapleton	13 Oct 1973	28 Oct 1973	C	R155
<a href="#">LUCK</a>	Lucy Evelyn	29 Aug 1975	5 Oct 1975	C	R155
<a href="#">SPILSBURY</a>	William	19 Dec 1973	22 Dec 1973	C	R156
<a href="#">SPILSBURY</a>	Kathleen Rose	16 Jun 2005	28 Jun 2005	C	R156
<a href="#">HEMMING</a>	Edward	18 Mar 1974	24 Mar 1974	C	R157
<a href="#">HEMMING</a>	Phyllis Rose	24 Oct 1981	29 Oct 1981	C	R157
<a href="#">NIBLETT</a>	Evelyn Jane	20 Apr 1980	27 Apr 1980	C	R157
<a href="#">BREWIN</a>	Lynn Anita	28 Dec 2012	17 Jan 2013	C	R157
<a href="#">MOULE</a>	Shelia Rosemary	27 Mar 2016	? ??? ?	C	R157
<a href="#">PETERS</a>	Fred William	10 Apr 1975	16 Apr 1975	C	R158
<a href="#">SWINGLER</a>	Alfred Walter	22 Dec 1975	18 Jan 1976	C	R159
<a href="#">SWINGLER</a>	Beryl Evelyn	28 Oct 2003	21 Dec 2003	C	R159
<a href="#">HUMPHREYS</a>	Cyril	? ??? 1989	1 Sep 1989	C	R160
<a href="#">BENNETT</a>	Elfreda Margaret	30 Dec 1997	31 Jan 1998	C	R162
<a href="#">ADAMS</a>	Jill Dianne	3 Sep 1980	? Sep 1980	C	R163
<a href="#">JONES</a>	Kathleen Susan	10 Oct 1984	16 Oct 1984	C	R164
<a href="#">PARRY</a>	Thomas Henry	22 Apr 1985	1 May 1985	C	R165
<a href="#">PARRY</a>	Florence	14 Apr 1990	2 May 1990	C	R165
<a href="#">BOSWORTH</a>	Frederick Charles	8 Feb 1987	17 Feb 1987	C	R166
<a href="#">SMALES</a>	Ronald	? ??? 1987	20 Nov 1987	C	R167
<a href="#">SMALES</a>	Ena Mavis	26 Jun 2002	? ??? 2002	C	R167
<a href="#">BROICH</a>	Ethel Marion	19 Dec 1987	7 Jan 1988	C	R168
<a href="#">BROICH</a>	Herbert Wilhelm	17 Nov 2005	25 Nov 2005	C	R168
<a href="#">ELKIN</a>	Doris Dawalder	12 Apr 1988	29 Apr 1988	C	R169
<a href="#">PEARCE</a>	Marjorie Doris	3 Feb 2013	7 Mar 2013	C	R169
<a href="#">PEARCE</a>	Alan Morriss	30 Sep 2015	16 Oct 2015	C	R169
<a href="#">DAVIS</a>	John	2 Sep 1990	? ??? 1990	C	R170
<a href="#">DAVIS</a>	Hazel Jean	15 Apr 2007	27 Apr 2007	C	R170
<a href="#">LISTER</a>	Christine	? ??? 1990	4 Feb 1991	C	R171
<a href="#">LISTER</a>	Osbert	30 Sep 2005	10 Nov 2005	C	R171
<a href="#">FORD</a>	Annie Alice	8 Sep 1991	13 Sep 1991	C	R172
<a href="#">WATTS</a>	Nora	19 Dec 1996	31 Dec 1996	C	R173
<a href="#">WATTS</a>	George	16 Jan 2000	1 Feb 2000	C	R173
<a href="#">JACKSON</a>	Albert Edward	20 Apr 1996	29 Apr 1996	C	R174
<a href="#">JACKSON</a>	Ivy Irene	29 Jul 1998	6 Aug 1998	C	R174
<a href="#">WARNER</a>	Cyril Thomas Malyon	19 Dec 1995	5 Jan 1996	C	R175
<a href="#">WARNER</a>	Dorothy Freda	8 Dec 2001	5 Feb 2002	C	R175
<a href="#">FULLER</a>	Gladys Hannah	20 Jul 1995	1 Aug 1995	C	R176
<a href="#">BENNETT</a>	Gerald Patrick	29 Sep 1991	4 Oct 1991	C	R177
<a href="#">BENNETT</a>	Pearl Georgina Alice	24 May 2008	6 Jun 2008	C	R177
<a href="#">WASE</a>	Cynthia	27 Feb 1995	8 Mar 1995	C	R178

Table c: South of tower (continued)

Surname	First Names	Date died	Int. date		Ref
<a href="#">NEWBURY</a>	Albert John Edward	12 Nov 1994	13 Dec 1994	C	R179
<a href="#">NEWBURY</a>	Kate Amelia	17 Oct 1998	14 Nov 1998	C	R179
<a href="#">AINGE</a>	Edith	12 Jan 1994	? ??? 1994	C	R180
<a href="#">COOKSON</a>	Richard Alistair	? ??? 1993	? ??? 1993	C	R181
<a href="#">COOKSON</a>	Dorothy Ann	11 Dec 2008	9 Jan 2009	C	R181
<a href="#">ROBERTSON</a>	Kenneth Simmonds	10 Mar 1993	? ??? 1993	C	R182
<a href="#">JONES</a>	Arthur Henry Douglas	12 Sep 1994	20 Sep 1994	C	R196
<a href="#">SANDERS</a>	John	8 Aug 2010	19 Aug 2010	C	R993
<a href="#">TRUSWELL</a>	Lorna Jeannette	18 Sep 2008	2 Nov 2008	C	R994

Figure c: South of tower



LeftMainPath

Table d: Left of main path

Surname	First Names	Date died	Int. date		Ref
MALINS	William	20 Sep 1925	24 Sep 1925	B	R101
MALINS	Susanna	19 Nov 1929	23 Nov 1929	B	R101
ANDREW	Ellen	25 Aug 1973	31 Aug 1973	C	R101
BROOKES	Sarah	25 Apr 1866		B	R102
FORD	Moses	12 Dec 1855		B	R103
FORD	Elizabeth	25 Jan 1881		B	R103
CULL	Richard	6 Jan 1870		B	R104
CULL	Annie			B	R104
CULL	Sarah Jane			B	R104
MAYOLL	Sarah	15 Feb 1885		B	R104
FOLLOWS	Mary Sophia	4 Nov 1923	8 Nov 1923	B	R105
WOODWARD	John Francis	13 Nov 1892		B	R106
STANTON	Albert Henry	29 May 1934	3 Jun 1934	B	R107
STANTON	Elizabeth	3 Jul 1902	7 Jul 1902	B	R107
LUDLOW	Ralph	16 Oct 1955	20 Oct 1955	B	R108
LUDLOW	Emily	18 Dec 1939	21 Dec 1939	B	R108
STANTON	Henry	2 Apr 1875		B	R111
STANTON	Ann	29 Oct 1881		B	R111
STINTON	George	30 Oct 1906	3 Nov 1906	B	R112
STINTON	Caroline	19 Nov 1921	22 Nov 1921	B	R112
PITTS	Maria	12 May 1890		B	R113
HAMBLIN	James	18 Aug 1872		B	R114
HAMBLIN	Mary	21 Oct 1876		B	R114
FLETCHER	John	5 Oct 1878		B	R115
FLETCHER	Mary	6 Jul 1869		B	R115
HEWITT	Ann	21 Jan 1870		B	R115
LIDSEY	John	12 Dec 1895		B	R117
LIDSEY	Zillah	29 Apr 1906	3 May 1906	B	R117
WILLIAMS	Louisa Ann	14 Jul 1898		B	R122
WILLIAMS	Henry	24 May 1906	28 May 1906	B	R122
WILLIAMS	Elizabeth	? Jan 1871	9 Feb 1871	B	R122
CURNOCK	John	7 Aug 1870		B	R123
CURNOCK	Harriet	20 Aug 1869		B	R123
STEPHENS	William	2 Apr 1896		B	R125
STEPHENS	Mary	25 Feb 1915		B	R125
AMBROSE	John Cole	22 Jul 1962	26 Jul 1962	B	R126
NIVEN	Henry	16 May 1890	22 May 1890	B	R127
NIVEN	Ann	? ??? 1872	8 Feb 1872	B	R127
NIVEN	Mary	27 Jun 1902		B	R127
NIVEN	Anne	12 Feb 1907		B	R127
PANTING	John	13 Oct 1931	17 Oct 1931	B	R128
BROOKES	Henry	7 Mar 1963	12 Mar 1963	B	R129
BROOKES	Ellen	21 Mar 1970	26 Mar 1970	B	R130
KNIGHT	Lydia		31 Jul 1901	B	R133
KNIGHT	George		29 Oct 1840	B	R133
SHOWELL	Jeremy Peter Dugard	? ??? 1974	9 Sep 1974	B	R134
PETRIE-HAY	W G	29 Aug 1989		C	R134
SPIERS	Sarah	28 Dec 1925	1 Jan 1926	B	R135

Table d: Left of main path (continued)

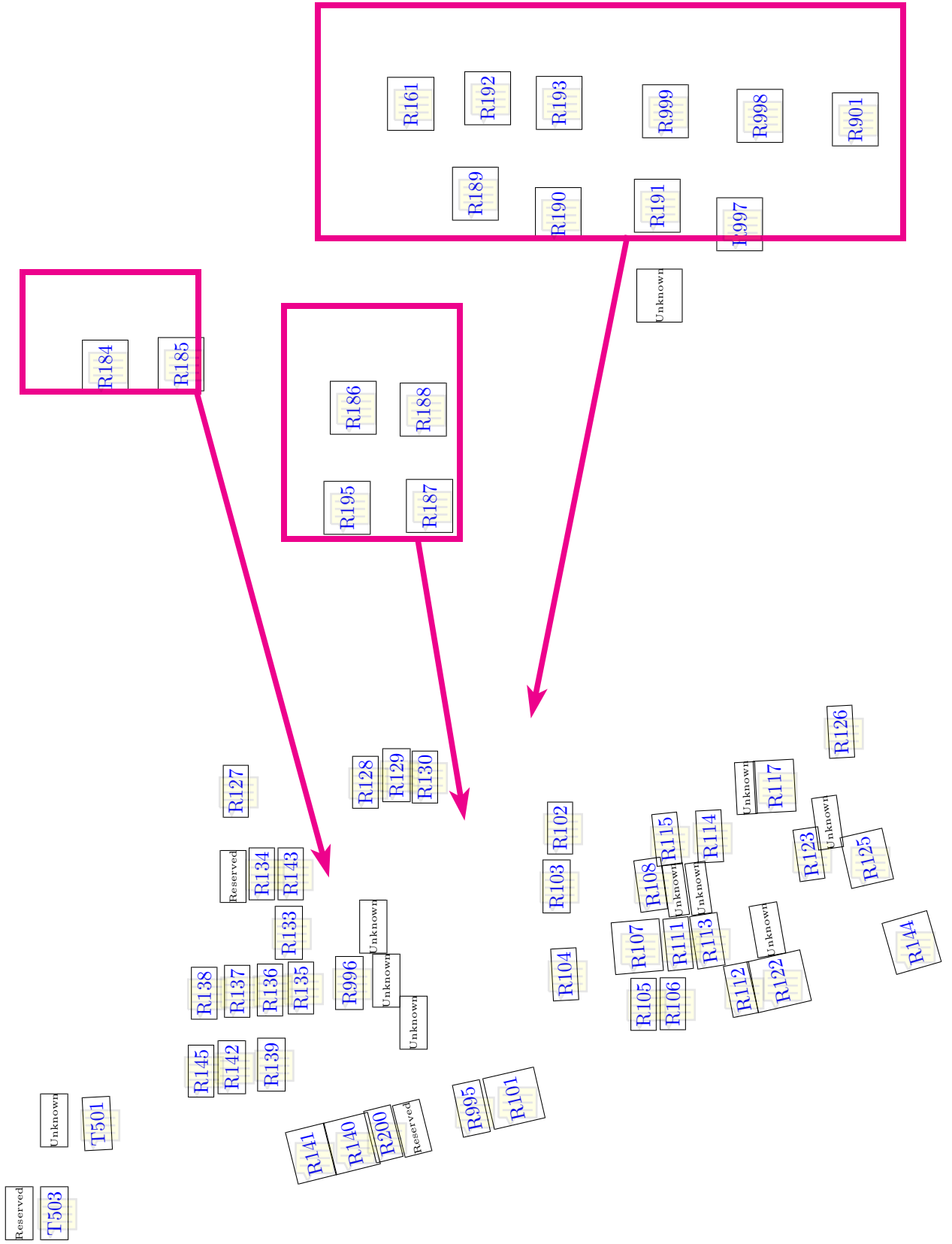
Surname	First Names	Date died	Int. date		Ref
SPIERS	James	3 Nov 1895		B	R136
SPIERS	Edward	31 May 1906	4 Jun 1906	B	R137
SPIERS	Mary	27 Nov 1914	1 Dec 1914	B	R137
SPIERS	George	25 Nov 1909	29 Nov 1909	B	R137
SPIERS	Ann Elizabeth	29 Aug 1924	2 Sep 1924	B	R138
STONYER	Henry Edward	17 Nov 1946	21 Nov 1946	B	R139
SPIERS	Joseph	5 Feb 1890		B	R139
SPIERS	Elizabeth	28 Dec 1900	1 Jan 1901	B	R139
STONYER	Sarah	29 Apr 1940	4 May 1940	B	R139
CLARKE	Margaret Alice	5 Apr 1983		B	R140
CLARKE	Thomas Edmund	6 Mar 1949	9 Mar 1949	B	R140
REEVES	Joseph Thomas	4 Jan 1929	7 Jan 1929	B	R141
REEVES	Alice	16 Dec 1946	21 Dec 1946	B	R141
SPIERS	Benjamin	11 Oct 1883		B	R142
GARDNER	Fanny	? Dec 1922	5 Dec 1922	B	R143
BROOKES	Frederick	21 Jun 1897		B	R144
BROOKES	Jane	10 Apr 1931	14 Apr 1931	B	R144
SPIERS	Edwin	27 Nov 1882		B	R145
EASTWOOD	Edgar	? ??? 1998	28 Apr 1998	C	R161
BAUGH	Norman	9 Sep 1998	19 Sep 1998	C	R184
BAUGH	(Hazel) Maureen	12 Apr 2021	21 Jun 2021	C	R184
HASELL	Rosina Kate	26 Nov 1998	3 Dec 1998	C	R185
HASELL	William Henry	13 Apr 2009	30 Apr 2009	C	R185
DOWNING	James Robert John	14 Jan 2000	2 Feb 2000	C	R186
FAWCETT	Clarissa Florence	8 Mar 2000	4 May 2000	C	R187
TURNER	Violet Grace	9 Feb 2001	19 Feb 2001	C	R188
LUDLOW	Janet Irene	8 May 2002	? ??? 2002	C	R189
STAFFORD-WOOD	John	8 Jan 2002	15 Jan 2002	C	R190
STAFFORD-WOOD	Marjorie Mary Noreen	2 Aug 2006	3 Sep 2006	C	R190
DEW	Keith Raymond	10 Jan 2005	24 Jan 2005	C	R191
DEW	Joan Lucy	14 Mar 2012	30 Mar 2012	C	R191
DEW	Dennis Raymond	29 Jun 2012	21 Jul 2012	C	R191
COCKBILL	George Harold	4 Jul 2003	10 Jul 2003	C	R192
COCKBILL	Clara Ann (Nancy)	29 Apr 2010	7 May 2010	C	R192
JESSON	Russell Edward William	19 May 2004	5 Jun 2004	C	R193
JESSON (Commemorated only)	Mary Patricia	? ??? 1994		B	R193
VALLANCE	George Edwin	13 Jun 2000	20 Jun 2000	C	R195
CLARKE	Stanley Joseph	3 Nov 2013	21 Nov 2013	B	R200
STEVENS	Simon Mark	20 Jun 2017	24 Jul 2017	C	R901
MALLINS	Ralph		1 Oct 1965	B	R995
MALLINS	Annie Selina		12 Aug 1966	B	R995
DAVIS	George		26 Oct 1905	B	R996
DAVIS	Selina	13 Dec 1888		B	R996
SWINGLE	Albert Edward	5 Oct 2007	6 Oct 2007	C	R997
SWINGLE	Elsie Florence	17 Jul 2016	1 Aug 2016	C	R997
ALLEN	Thelma Marjorie	18 Mar 2008	1 Apr 2008	C	R998
WILLIAMS	Lillian Grace	16 Oct 2007	24 Oct 2007	C	R999
WILLIAMS	Ronald Frederick	14 Dec 2009	23 Dec 2009	C	R999
MOSS	Hannah	22 Jul 1931	25 Jul 1931	B	T501
LAMPITT	Florence Worthington	? ??? 1960	24 Dec 1960	B	T503

Table d: Left of main path (continued)

Surname	First Names	Date died	Int. date		Ref
<a href="#">LAMPITT</a>	Geoffrey George	15 Nov 2006	24 Nov 2006	B	T503



Figure d: Left of main path

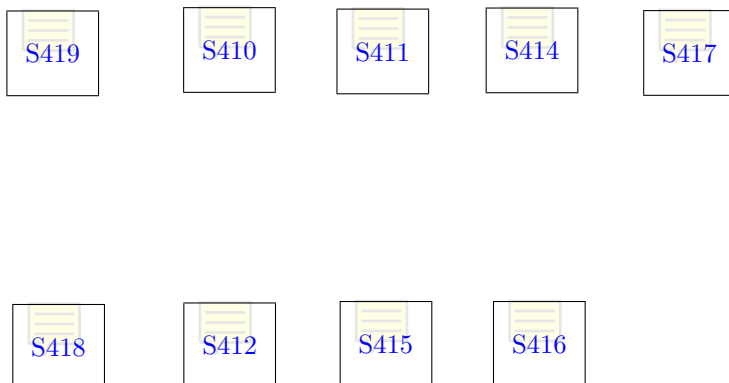


RightOfMainDoor

Table e: Right of porch

Surname	First Names	Date died	Int. date		Ref
<a href="#">GOLDING</a>	Gwendoline Olive	19 Sep 1991	26 Sep 1991	C	S410
<a href="#">GOLDING</a>	Douglas Sidley	1 Jun 2008	17 Jun 2008	C	S410
<a href="#">JONES</a>	Gwendolen Ellen	29 Feb 1988	20 Mar 1988	C	S411
<a href="#">JONES</a>	George	29 Aug 1994	6 Sep 1994	C	S411
<a href="#">MORRIS</a>	Gordon William	30 Aug 1992	7 Sep 1992	C	S412
<a href="#">MORRIS</a>	Margery Laura Beatrice	10 Jan 2005	20 Jan 2005	C	S412
<a href="#">HARDING</a>	Geoffrey David	5 Oct 2016	18 Oct 2016	C	S414
<a href="#">DAVIDSON</a>	Mary Patricia	29 Sep 2016	14 Oct 2016	C	S415
<a href="#">SALISBURY</a>	Bernard John	21 Nov 2015	16 Dec 2015	C	S416
<a href="#">DORRELL</a>	Nora Joyce	6 Jun 2016	16 Dec 2016	C	S416
<a href="#">HAYTER</a>	Eileen	16 Mar 2017		C	S417
<a href="#">LEE</a>	Raymond Frederick	23 Apr 2017	18 Jul 2017	C	S418
<a href="#">LEE</a>	Pauline Constance	15 Sep 2014	8 Oct 2014	C	S418
<a href="#">COWLEY</a>	William Leonard (Len)	21 Dec 2016	12 Jan 2017	C	S419
<a href="#">COWLEY</a>	Roslyn Alice	12 Jan 2018	14 Feb 2018	C	S419

Figure e: Right of porch



RightMainPath

Table f: Right of main path

Surname	First Names	Date died	Int. date		Ref
<a href="#">SMALL</a>	William	28 Oct 1706		B	S330
<a href="#">GREVEY</a>	John			B	S360
<a href="#">HANDS</a>	Horace	? ??? 1991	18 Sep 1991	B	S301
<a href="#">HANDS</a>	Hilde Karla Elfriede	30 Jun 2017	13 Jul 2017	B	S301
<a href="#">ANSELL</a>	Francis John	31 Mar 1962	4 Apr 1962	B	S302
<a href="#">ANSELL</a>	Lucy Mary	15 Jan 1972	19 Jan 1972	B	S302
<a href="#">DAY</a>	Francis William	17 Mar 1975	20 Mar 1975	B	S303
<a href="#">DAY</a>	Margaret Jane	18 Jun 1990	26 Jun 1990	B	S303
<a href="#">AINGE</a>	Mabel	10 Apr 1959	14 Apr 1959	B	S304
<a href="#">AINGE</a>	George Arthur	11 Mar 1950	15 Mar 1950	B	S304
<a href="#">MASTERS</a>	Constance Elizabeth	20 Jan 1968	24 Jan 1968	B	S305
<a href="#">DAY</a>	Francis John	7 Jan 1944	11 Dec 1944	B	S306
<a href="#">DAY</a>	Cecilia	28 Aug 1964	31 Aug 1964	B	S306
<a href="#">DAY</a>	Edwin Charles (Eddie)	19 Feb 2012		B	S306
<a href="#">BLUCK</a>	Edith	21 Sep 1899		B	S307
<a href="#">BLUCK</a>	John	23 Mar 1930	25 Mar 1930	B	S307
<a href="#">BLUCK</a>	Harry	27 Oct 1901	31 Oct 1901	B	S307
<a href="#">DAY</a>	Richard John	14 Nov 1966	18 Nov 1966	B	S308
<a href="#">DAY</a>	John Richard	17 Mar 1945	? Mar 1945	B	S308
<a href="#">MASTER</a>	William	10 Dec 1766		B	S309
<a href="#">BEST</a>	John	13 Dec 1766		B	S311
<a href="#">CURNOCK</a>	Lawrence	26 Sep 1763		B	S313
<a href="#">CURNOCK</a>	Ann	18 Dec 1775		B	S313
<a href="#">CURNOCK</a>	Ann	5 Aug 1725		B	S313
<a href="#">CURNOCK</a>	William	26 Dec 1823		B	S313
<a href="#">CURNOCK</a>	Lawrence	4 Jun 1757	26 Jun 1757	B	S313
<a href="#">CURNOCK</a>	Robert	9 Jun 1775		B	S313
<a href="#">FARLEY</a>	Mary	24 Sep 1749		B	S314
<a href="#">SPIERS</a>	Mary	31 Oct 1876	4 Nov 1876	B	S315
<a href="#">SPIERS</a>	Richard	15 Sep 1875		B	S315
<a href="#">SPIERS</a>	Mary		24 Sep 1858	B	S315
<a href="#">FISHER</a>	Dennis Sidney	7 Dec 1943	10 Dec 1943	B	S316
<a href="#">FISHER</a>	Lillian Gertrude	18 Jan 1991	28 Jan 1991	B	S317
<a href="#">FISHER</a>	Robert	28 May 1984	4 Jun 1984	B	S317
<a href="#">BIDDLE</a>	George		28 Nov 1882	B	S318
<a href="#">BIDDLE</a>	Henry		3 Jun 1896	B	S318
<a href="#">ANSELL</a>	James William	2 Aug 1930	5 Aug 1930	B	S319
<a href="#">ANSELL</a>	Samuel	5 Oct 1925	8 Oct 1925	B	S319
<a href="#">ANSELL</a>	Mary	3 Apr 1943		B	S319
<a href="#">ANDREWS</a>	Leslie John	? ??? 1987	6 May 1987	B	S322
<a href="#">ANDREWS</a>	Lillian Frances	? ??? 1976	8 Apr 1976	B	S322
<a href="#">DAY</a>	Elizabeth	3 Jun 1921	7 Jun 1921	B	S323
<a href="#">DAY</a>	George	4 Jun 1906	8 Jun 1906	B	S324
<a href="#">DAY</a>	Maria	10 Jan 1922	14 Jan 1922	B	S324
<a href="#">TANDY</a>	Mary	10 Mar 1729		B	S325
<a href="#">STEPHENS</a>	Winifred	13 Apr 1803		B	S327
<a href="#">HODGKINS</a>	Susanna	20 Dec 1810		B	S328
<a href="#">RUSSELL</a>	William	18 Dec 1800		B	S329

Table f: Right of main path (continued)

Surname	First Names	Date died	Int. date		Ref
RUSSELL	Mary	10 Jul 1804		B	S329
HAYNES	John	4 Jun 1949		B	S333
HAYNES	Varina Mary	17 Dec 1966	21 Dec 1966	B	S333
FIRKINS	Ellen	17 Nov 1876	22 Nov 1876	B	S335
FIRKINS	Mary Ann	11 Nov 1868		B	S337
FIRKINS	George John	11 Sep 1868		B	S338
FIRKINS	Mary	14 Dec 1871		B	S339
FIRKINS	William	17 Mar 1860		B	S340
FIRKINS	Mary	17 Apr 1829		B	S340
GREENALL	Georgiana Holmes	4 Mar 1896	7 Mar 1896	B	S343
BROOKES	Annie	22 Dec 1939	27 Dec 1939	B	S344
BROOKES	William	18 Feb 1918	23 Feb 1918	B	S344
WHEELER	William Kennard	26 Sep 1938	1 Oct 1938	B	S345
WHEELER	Mary	22 Nov 1953	26 Nov 1953	B	S345
COOMBS	George Gurney	20 Mar 1932	24 Mar 1932	B	S346
COOMBS	Sarah Ann	25 Apr 1960	29 Apr 1960	B	S346
RIGHTON	Albert Henry	11 Dec 1920	15 Dec 1920	B	S347
AINGE	Sarah Jane Righton	10 Oct 1936	14 Oct 1936	B	S347
CHANDLER	Elizabeth	29 Nov 1855	7 Dec 1855	B	S349
CHANDLER	Thomas	8 Aug 1824		B	S349
CHANDLER	John	27 Jan 1867		B	S349
STEPHENS	John	16 Feb 1865		B	S350
STEPHENS	Mary	13 Jul 1847		B	S351
STEPHENS	Robert		8 Sep 1875	B	S351
STEPHENS	Robert	26 Jun 1848		B	S351
STEPHENS	Winifred	29 Jan 1847		B	S351
BAYLES	John			B	S353
BAYLES	Hannah	8 Jul 1837		B	S354
KINMAN	William	14 Aug 1714		B	S355
STEPHENS	Jane	29 Apr 1880		B	S356
HARRIS	John	17 Jan 1905	23 Jan 1905	B	S357
HARRIS	Sarah Ann	11 Jan 1927	14 Jan 1927	B	S357
WHEELER	William	13 May 1910	18 May 1910	B	S358
NIBLETT	James	15 Jan 1955	19 Jan 1955	B	S359
NIBLETT	Edith May	26 Nov 1938	30 Nov 1938	B	S359
LANE	John Emes	2 May 1800		B	S361
LLOYD	Alfred	27 May 1934	31 May 1934	B	S362
LANE	Robert	10 May 1767		B	S363
SMITH	Hedley	25 Jan 1973	30 Jan 1973	B	S364
SMITH	Gertrude Mary (Molly)	? ??? 1991	10 Sep 1991	B	S364
SMITH	Henry Francis	8 Oct 1971	12 Oct 1971	B	S365
SMITH	Gwendoline Mildred	10 Jan 2002	18 Jan 2002	B	S365
SMITH	Felix Robert	24 Dec 1938	30 Dec 1938	B	S366
SMITH	Elizabeth Annie	27 Oct 1944	29 Oct 1944	B	S366
LANE	Mary	7 May 1754		B	S367
LANE	Elisha	26 Nov 1764		B	S367
SHERWOOD	Frederick	1 Jul 1947	4 Aug 1947	B	S368
SHERWOOD	Emma Elizabeth	17 Jun 1955		B	S368
MORRIS	George	28 Feb 1954	4 Mar 1954	B	S369

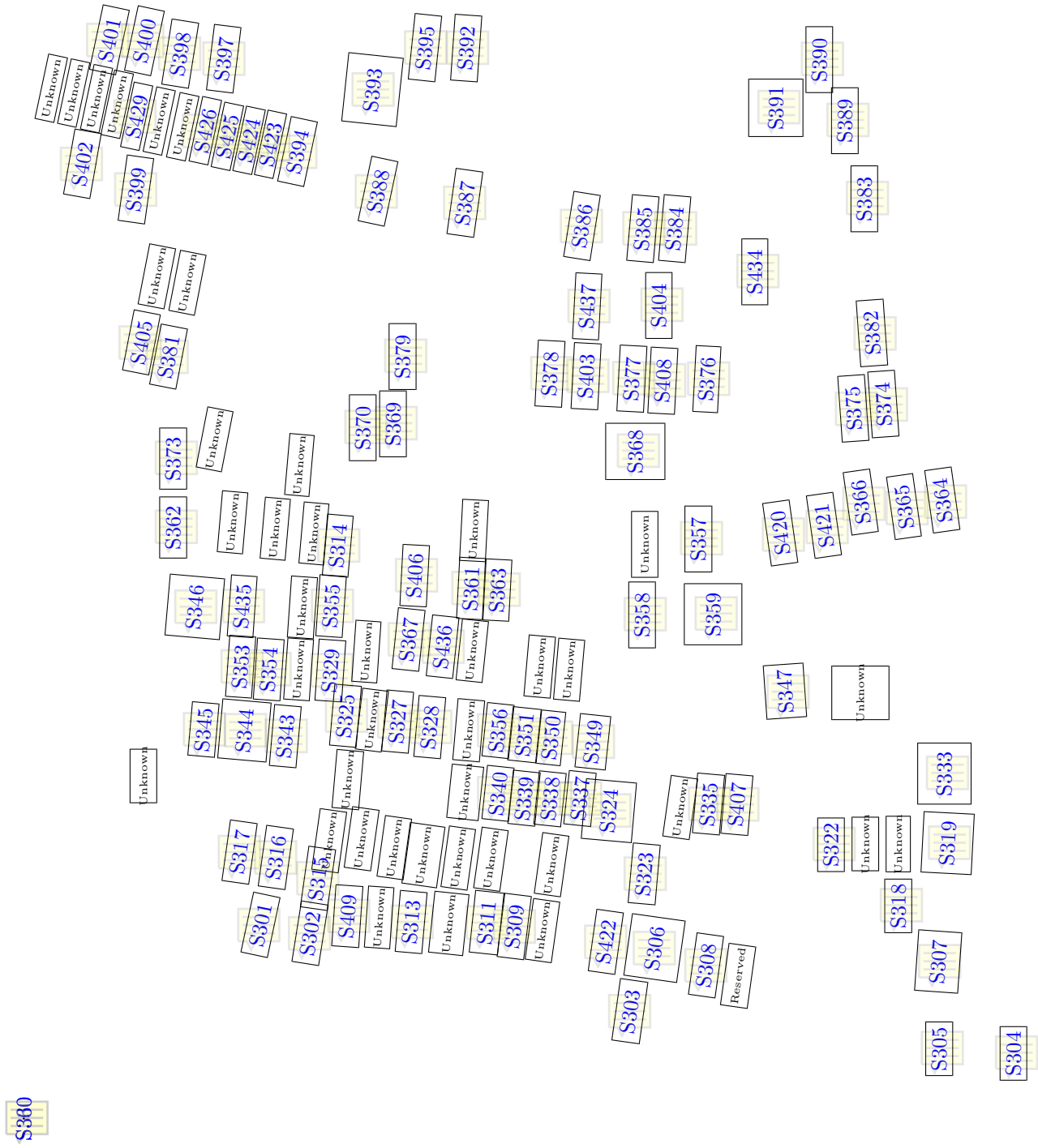
Table f: Right of main path (continued)

Surname	First Names	Date died	Int. date		Ref
MORRIS	Mary Ann	22 May 1969	28 May 1969	B	S369
JONES	Edmund Mansell	7 Mar 1981	11 Mar 1981	B	S370
JONES	Gladys Emily	15 Jan 2006	25 Jan 2006	B	S370
JONES	Arthur William	11 Aug 1942	15 Aug 1942	B	S373
JONES	Clara Ellen	13 Jun 1944	17 Jun 1944	B	S373
HAMPTON	Violet	28 Feb 1973	5 Mar 1973	B	S374
CROUCH	Walter	26 Nov 1976	1 Dec 1976	B	S375
CROUCH	Miriam Amy	19 Dec 1979	22 Dec 1979	B	S375
WARNER	Pauline Margaret	? ??? 1978	11 Dec 1978	B	S376
STEPHENS	Dawn	28 Jul 1964	2 Sep 1964	B	S377
COLLINS	Ellen (Nell)	7 Mar 1940	9 Mar 1940	B	S378
COLLINS	Harry	2 Aug 1944	7 Aug 1944	B	S378
SHELTON	John		27 Dec 1929	B	S379
HAYNES	A A			B	S381
BAMBURY	Frederick Sidney	30 Oct 1972	2 Nov 1972	B	S382
BAMBURY	Elsie May	29 Apr 1977	3 May 1977	B	S382
ANDREWS	Doris Mary	? ??? 1972	29 Jan 1972	B	S383
ANDREWS	Harry Louis	? ??? 1992	27 Nov 1992	B	S383
LUDLOW	John George	19 Jul 1976	23 Jul 1976	B	S384
LUDLOW	Cicely	10 Jun 1978	15 Jun 1978	B	S384
POWLES	Eric Francis	1 Sep 1980	5 Sep 1980	B	S385
POWLES	Muriel Margaret	25 Aug 2003	4 Sep 2003	B	S385
AINGE	Phillip Richard	22 Dec 1985	27 Dec 1985	B	S386
AINGE	Florence Margaret	11 Mar 1988	17 Mar 1988	B	S386
HURDMAN	Edwin	23 Jun 1889		B	S387
HURDMAN	Mary		28 Sep 1912	B	S387
HEMMING	Annie	31 May 1963	6 Jun 1963	B	S388
HEMMING	Richard	9 May 1928	12 May 1928	B	S388
HARRIS	Elsie Winifred	12 Nov 1971	16 Nov 1971	B	S389
SOUTHAM	Paul Clement	18 Mar 1974	23 Mar 1974	B	S390
SOUTHAM	Margaret Elizabeth Woodyatt	16 Feb 1976	21 Feb 1976	B	S390
SEABRIGHT (Memorial only)	Kenneth Joseph	25 Nov 1941		B	S391
SEABRIGHT	Hubert	11 Mar 1956	17 Mar 1956	B	S391
SEABRIGHT	Susan Ellen	17 Feb 1963	22 Feb 1963	B	S391
GREEN	John	10 May 1868		B	S392
GREEN	Eliza	4 Nov 1898		B	S392
GREEN	Emery	28 Jan 1868		B	S392
WILLETTS	William	29 Feb 1892		B	S393
WILLETTS	Mary	6 Sep 1862		B	S393
WILLETTS	Jane	19 Sep 1879		B	S393
WILLETTS	Lucy	12 Jan 1898		B	S393
WILLETTS	John	2 Jun 1834	7 Jun 1834	B	S394
WILLETTS	Benjamin	29 Oct 1824	3 Nov 1824	B	S394
HANDS	Thomas	28 Feb 1881	4 Mar 1881	B	S395
DORRELL	James	6 May 1868		B	S397
DORRELL	Selina	16 Apr 1866		B	S397
BROOKES	Sarah	31 May 1890		B	S398
BROOKES	John William	1 May 1898		B	S399
NIBLETT	Benjamin	3 Mar 1878		B	S400
NIBLETT	Elizabeth	20 Jan 1881		B	S400

Table f: Right of main path (continued)

Surname	First Names	Date died	Int. date		Ref
NIBLETT	William	10 Mar 1877		B	S401
CHANDLER	Joseph	25 Mar 1884	29 Mar 1884	B	S402
CHANDLER	Maria	18 Jun 1834		B	S402
TREDWELL	Maria	8 Oct 1875		B	S402
STEPHENS	Grant	3 Dec 1995	8 Dec 1995	B	S403
FOSTER	Alice Maud	9 Feb 1976	14 Feb 1976	B	S404
SMITH	John	11 Feb 1694		B	S405
GREEN	John		23 Aug 1831	B	S406
FIRKINS	Thomas Phipps	20 May 1880	24 May 1880	B	S407
STEPHENS	Mary Ruth	21 Apr 2009	30 Apr 2009	B	S408
STEPHENS	Ronald Alexander		31 Jan 1976	B	S408
ANSELL	Phillip James	9 Nov 2007	19 Nov 2007	B	S409
BIBIS	Patricia (Pat) Jean	3 Aug 2019	29 Aug 2019	C	S409
HORDER	Alison Jeanette	10 Oct 2009	21 Oct 2009	B	S420
SMITH	Harvey James	? ??? 1987		B	S421
SMITH	Muriel Jean	? ??? 1988		B	S421
SMITH	Geoffrey Felix	? Jan 2001	29 Jan 2001	B	S421
DAY	Geoffrey Edwin	13 May 2015	29 May 2015	B	S422
WILLETTS	Mary	25 Jul 1851	30 Jul 1851	B	S423
WILLETTS	Benjamin	4 Jan 1849		B	S424
WILLETTS	Thomas	15 Jan 1848		B	S425
WILLETTS	Joseph	17 Dec 1838		B	S426
WILLETTS	M	? ??? 1875		B	S429
TREDWELL	Minnie	? ??? 1956		B	S434
TREDWELL	William	? ??? 1965		B	S434
FARLY	Richard	20 Apr 1682		B	S435
FARLY	William	15 Dec 1686		B	S435
BEST	Mary			B	S436
HARRIS	Cecil Victor	13 Aug 1979		B	S437
HARRIS	Elizabeth Doris (Dolly)	14 Jan 1997	22 Jan 1997	B	S437
HARRIS	Andrew (Andy) Shelton	3 Mar 2023	10 Aug 2023	C	S437

Figure f: Right of main path



# St James, Bishampton – Known Interments

12 Mar 2024

BackOfChurch

Table g: Behind church

Surname	First Names	Date died	Int. date		Ref
CHANDLER	John	27 Dec 1925	31 Dec 1925	B	T504
CHANDLER	Jane Maria	3 Jul 1908	7 Jul 1908	B	T504
CHANDLER	Mary Maria		22 Nov 1885	B	T504
EWINS	James	7 Jul 1906	12 Jul 1906	B	T505
EWINS	Elizabeth	8 Nov 1930	22 Nov 1930	B	T505
EWINS	Harry	9 Jul 1917	24 Jul 1917	B	T505
ATKINSON	Robert Leighton	19 Dec 1896		B	T506
CHANDLER	George	6 Dec 1957	10 Dec 1957	B	T507
SALISBURY	Cyril James	25 Mar 1987	2 Apr 1987	B	T508
SALISBURY	Albert John	27 Sep 1930	2 Oct 1930	B	T509
SALISBURY	Lilian	13 Nov 1966	17 Nov 1966	B	T509
HARRIS	Arthur Thomas	1 Sep 1945	5 Sep 1945	B	T510
HARRIS	Ann	24 May 1968	29 May 1968	B	T510
HARRIS	Florence May	8 Dec 1987	18 Dec 1987	B	T510
SALISBURY	Thomas	10 Apr 1932	14 Apr 1932	B	T511
SHOPLAND	Lawrence John	29 Nov 1988	5 Dec 1988	B	T513
WEAVER	Robert	4 Aug 1990	8 Aug 1990	B	T514
WEAVER	Ada	17 Apr 2002	16 Sep 2002	C	T514
LANE	Raymond Austin Joseph	7 Jan 1991	12 Jan 1991	B	T516
LANE	Elizabeth Margaret Rose (Betty)	19 Jul 2017	10 Aug 2017	B	T516
FOLLOWS	James Edgar	8 Jan 1980	14 Jan 1980	B	T518
FOLLOWS	Rose Mary	3 Apr 1984	16 Apr 1984	B	T518
ALDRIDGE	Beatrice Sarah Florence (Trixie)	12 Jul 1985	17 Jul 1985	B	T519
HARRIS	James	28 Aug 1962	28 Aug 1962	B	T520
HARRIS	Louisa	18 Jul 1964	18 Jul 1964	B	T520
SMITH	Emma	26 Jan 1942	31 Jan 1942	B	T521
SMITH (Commemorated only)	Hemming	1 Oct 1945		B	T521
SALE	Miriam Alma	1 Apr 1987	17 Apr 1987	B	T522
WEBB	Ada	28 Mar 1988	5 Apr 1988	B	T523
BAKEWELL	Florence Nellie	23 Jul 1964	22 Jul 1964	B	T524
BAKEWELL	Herbert Benjamin	13 Jan 1989	19 Jan 1989	B	T524
CRAWFORD	Susan Gail	24 Jul 2003	31 Jul 2003	B	T525
GOUGH	Alfred Leonard	6 Mar 1991	9 Mar 1991	B	T526
WASE	Anita Lorraine (Lorri)	23 Oct 1997	3 Nov 1997	B	T527
REDMAN	Matthew James	10 Aug 1997	18 Aug 1997	B	T528
MORRIS	Mary	24 Mar 1997	29 Mar 1997	B	T529
MORRIS	Graham Alec	19 Sep 1999	24 Sep 1999	B	T529
BARRETT	Francis William	21 Feb 1997	27 Feb 1997	B	T530
BARRETT	Barbara Grace	28 Mar 2006	4 Apr 2006	B	T530
FISHER	Robert William John	8 May 1994	16 May 1994	B	T531
FISHER	Iris June	10 Sep 1994	16 Sep 1994	B	T531
ANSELL	Leslie Francis	1 Apr 1994	8 Apr 1994	B	T532
CUTTRISS	Eileen	? ??? 1993	? ??? 1993	B	T533
CUTTRISS	Leslie Hereford	? ??? 1993	3 Apr 1993	B	T533
JONES	Linda Margaret	4 Sep 2000	12 Sep 2000	B	T534
JONES	Reginald Keith	26 Jun 2013	4 Jul 2013	B	T534
JONES	Percy Glynn	4 Apr 1999	9 Apr 1999	B	T535
JONES	Lily	4 Oct 2003	13 Oct 2003	B	T535



Table g: Behind church (continued)

Surname	First Names	Date died	Int. date		Ref
MILES	Peggy Cecilia	17 Sep 2004	29 Sep 2004	B	T536
MILES	George	27 Jan 2014	13 Feb 2014	B	T536
POOLE	Oliver John	11 May 2000	31 May 2000	B	T537
GOUGH	Margaret Nellie	20 Feb 2005	3 Mar 2005	B	T538
WOOD	Alma Rachel	21 Feb 2005	7 Mar 2005	B	T539
RIGG	Lucy-Anne	8 May 2014	16 May 2014	B	T540
DOBIE	Norma	4 Apr 2011	14 Apr 2011	B	T550
TANK	Reiko	6 Nov 1988	19 Nov 1988	B	T552
TANK	Selina Hazel	15 Jan 2010	1 Feb 2010	B	T553
TANK	James Richard	23 Mar 2023	6 Aug 2023	C	T553
ALLEN	Joseph William	15 Aug 2010	25 Aug 2010	B	T554
PERKS	Rachel	? ??? 1934	29 Jan 1934	B	T555
PERKS	John	? ??? 1933	22 Jul 1933	B	T555
COX	Edith Rachel	19 Jun 1968	25 Jun 1968	B	T555
COX	John Redvers	? ??? 1979	? ??? 1979	B	T555
NASH	Daniel William	8 Apr 2009	22 Apr 2009	B	T556
POOLE	Simon St Just	10 Apr 2006	21 Apr 2006	B	T557
POOLE	Daphne	2 Jan 2005	10 Jan 2005	B	T558
POOLE	Anthony John	2 Sep 2009	9 Sep 2009	B	T558
WARD	Edward Allan	25 Feb 2014	5 Mar 2014	B	T562
WARD	Nellie Jane Beavan	26 May 2015	19 Jun 2015	B	T562
HARRIS	Margaret Eva	28 Nov 2015	14 Dec 2015	B	T564
HARRIS	Peter Michael John	25 Oct 2023	22 Feb 2024	C	T564
TARVER	Francis Edward	3 Jan 2015	10 Jan 2015	B	T565
ROBERTSON	Henrietta (Rita) Kemp	11 Aug 2012	17 Aug 2012	B	T566
ROBERTSON	William (Willie) Archibald	13 Oct 2020	29 Oct 2020	B	T566
BARLOW	Charles Frank	22 Jan 2019	22 Feb 2019	B	T567
GOUGH	Rodney Arthur	22 Nov 2015	11 Dec 2015	B	T569
JOHNES	Michael David	19 May 2020	8 Jun 2020	B	T571
BARBARO	Salvatore Leonardo (Len)	5 Jan 2019	24 Jan 2019	B	T572
MCGINITY	Bryan James	12 Oct 2019	30 Oct 2019	B	T574
DICKINSON	Martin James Forrest	17 Nov 2022	6 Dec 2022	B	T575
ARGYLE	Malcolm William	23 Mar 2023	6 Apr 2023	B	T577

Figure g: Behind church

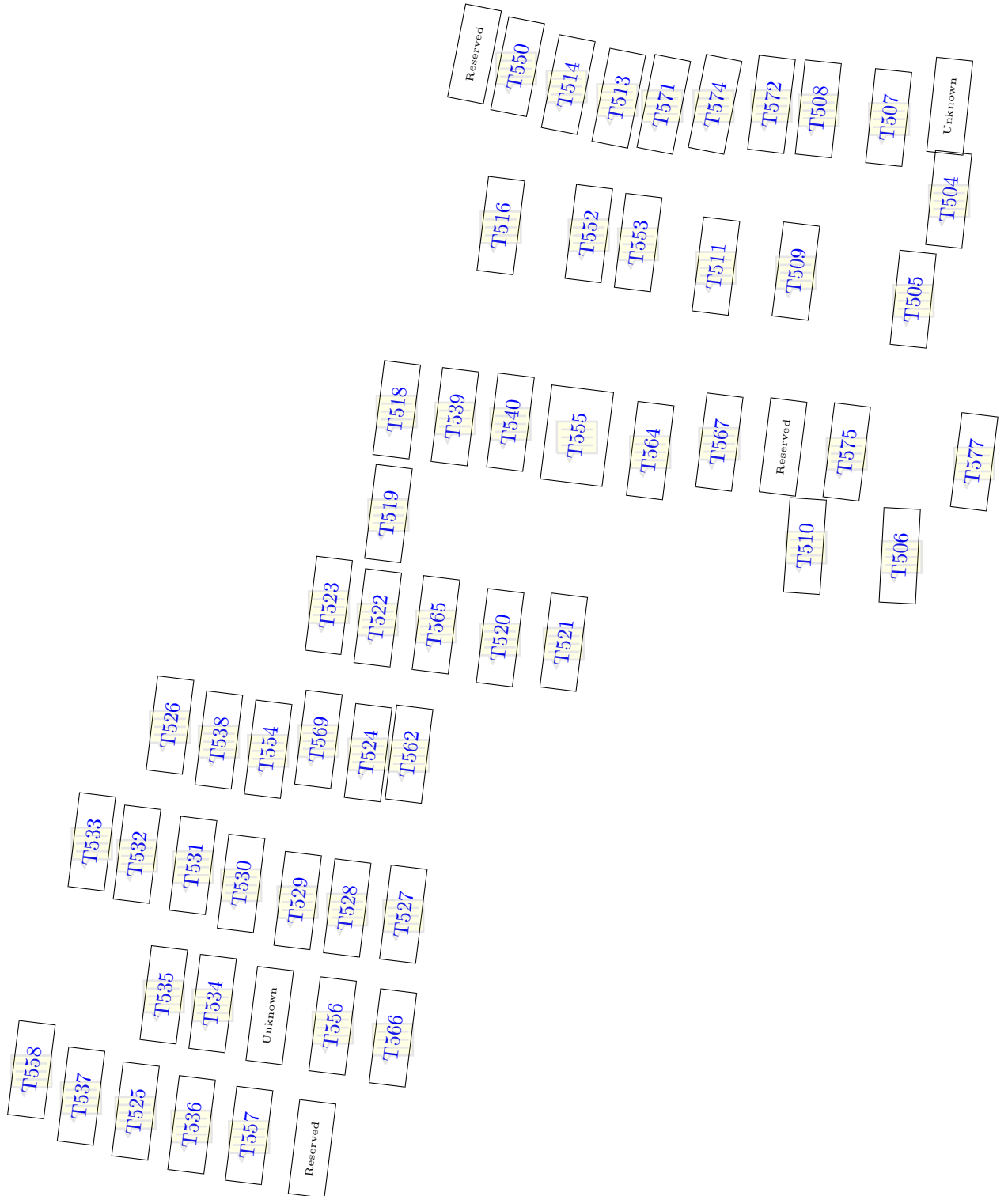


Table h: Memorial Garden (behind church)

Surname	First Names	Date died	Int. date		Ref
<a href="#">COPELAND</a>	Ruby	11 Oct 2018	1 Nov 2018	C	T700
<a href="#">OAKLEY</a>	Lisa Margaret	? May 2020	18 Jun 2020	C	T702

Figure h: Memorial Garden (behind church)

